

MCCM Series

Multilayer Chip Common Mode Filter

Size 0906



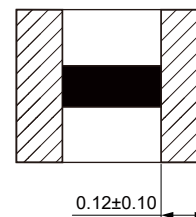
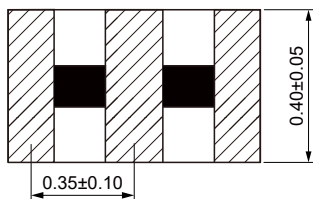
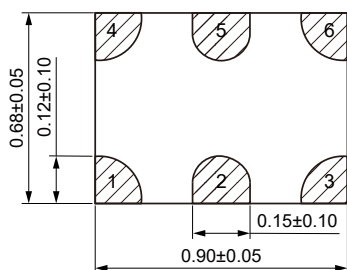
FEATURES

- Effective for suppressing common mode noise at high frequency.
- Excellent solderability characteristics.
- Small size & low profile.
- Multilayer type SMD component based on LTCC technology.
- Operating temperature: -40 to +85 °C

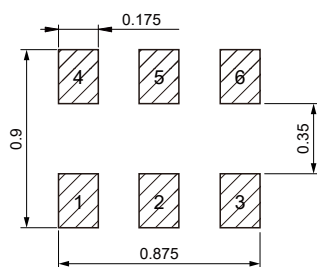
APPLICATION

- Common mode noise suppression of high speed differential signal lines, such as MIPI, MHL, HDMI, IEE802.3 in mobile phone, tablet PC, TV etc.

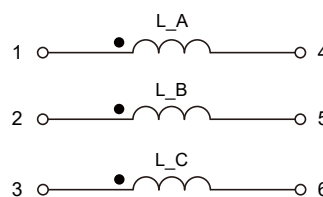
Dimensions: [mm]



Land Pattern: [mm]



Schematic:



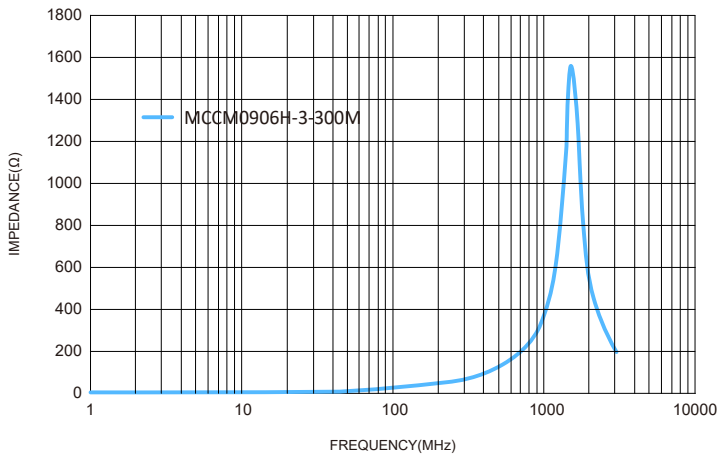
Electrical Properties:

Part No	Impedance @ 100MHz (Ω)	Tolerance	DC Resistance Max. (Ω)	Rated Current Max. (mA)	Rated Voltage (Volts)	Insulation Resistance Min. (MΩ)
MCCM0906H-3-300M	30	±20%	4.0	100	12.5	100

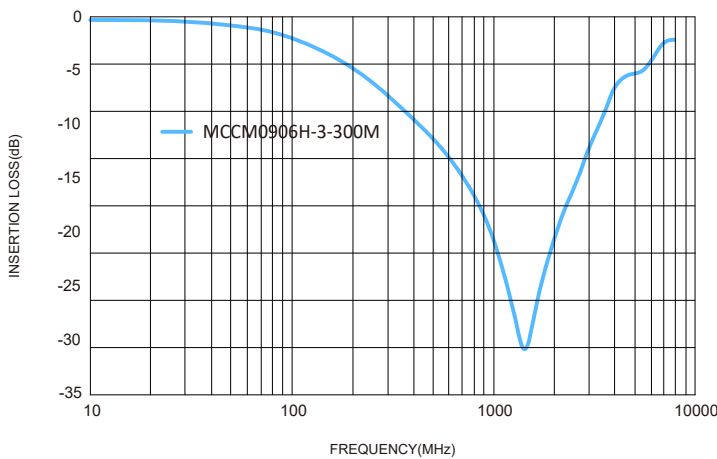
Note: Absolute maximum long term direct-current voltage between wire AB, AC or BC: 1.5V.

Typical Electrical Characteristics:

Impedance & Frequency Characteristics(Common):



Insertion loss & Frequency Characteristics(Common):



Insertion loss & Frequency Characteristics(Differential):

