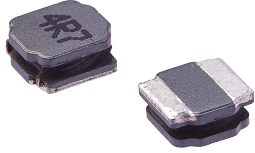


NRSE Series
SMD Shielded Tiny Power Inductor
Size 6020



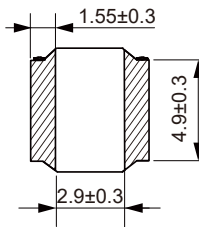
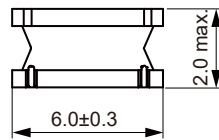
CHARACTERISTICS

- Magnetic resin for higher current and semi-magnetically shielded
- Quantity: 3000pcs

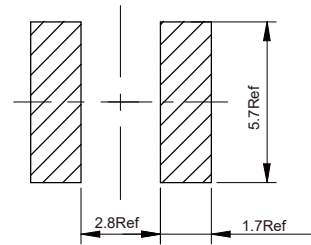
APPLICATION

- DC/DC converter
- LC filter

Dimensions: [mm]



Land Pattern: [mm]



Electrical Properties:

Part No	Inductance @100KHz/0.25V (μH)	Tolerance	Saturation current (A)	Temperature Rise Current (A)	DCR ±30% (mΩ)
NRSE6020-R68N	0.68	±30%	7.5	3.8	15
NRSE6020-1R0N	1.0	±30%	4.8	3.5	20
NRSE6020-1R2N	1.2	±30%	4.3	3.5	20
NRSE6020-1R5N	1.5	±30%	4.3	3.2	25
NRSE6020-2R2N	2.2	±30%	3.75	2.75	35
NRSE6020-3R3N	3.3	±30%	3.15	2.6	45
NRSE6020-4R7N	4.7	±30%	3.0	2.0	58
NRSE6020-5R6M	5.6	±20%	2.4	1.9	70
NRSE6020-6R8M	6.8	±20%	2.2	1.8	85
NRSE6020-100M	10	±20%	1.75	1.4	120
NRSE6020-150M	15	±20%	1.5	1.2	160
NRSE6020-220M	22	±20%	1.25	1.0	240
NRSE6020-270M	27	±20%	1.15	0.95	350
NRSE6020-330M	33	±20%	1.1	0.9	400
NRSE6020-470M	47	±20%	1.0	0.8	500
NRSE6020-680M	68	±20%	0.8	0.68	815

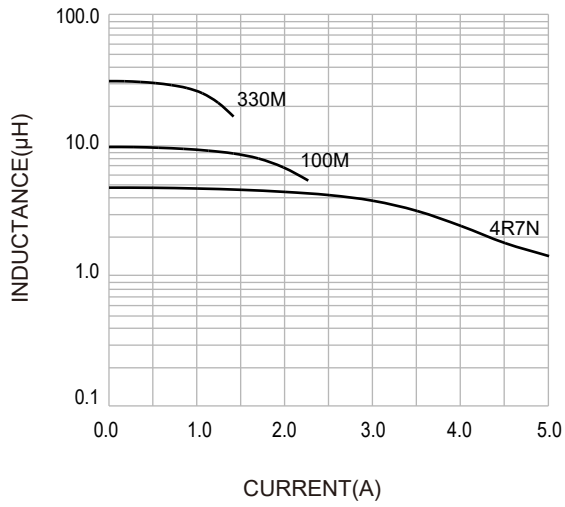
Operating temperature : -40 C ~ +125 C

Temperature rise current: the actual value of DC current when the temperature rise is ΔT40 C

Saturation Current that will cause initial inductance to drop approximately 30%

Typical Electrical Characteristics:

Inductance VS. Current Characteristics:



Temperature Rise VS. Current Characteristics:

