

WWCI Series
SMD Wire Wound Ceramic Inductor
Size 0805



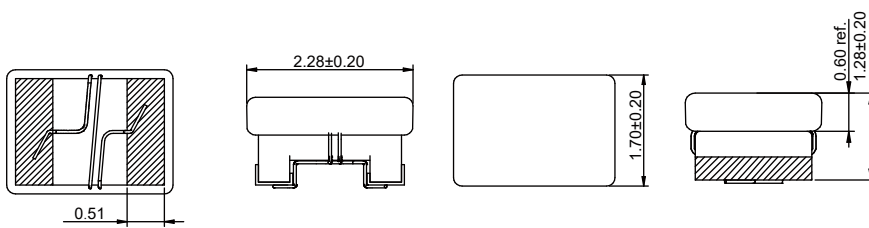
CHARACTERISTICS

- Wire wound with high Q and high SRF
- More stable due to ceramic design
- Small size and small tolerance available
- Quantity: 2000pcs

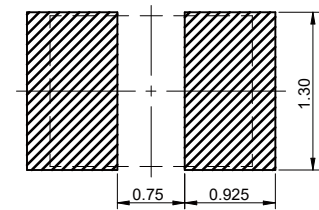
APPLICATION

- HF application

Dimensions: [mm]



Land Pattern: [mm]



Electrical Properties:

Part No	Inductance (nH)	Test Condition @MHz	Tolerance	Q Min.	Test Condition Q @MHz	Temperature Rise Current Max. (mA)	DCR Max. (Ω)	SRF Min. (MHz)
WWCI0805-2N7B	2.7	250	±0.2 nH	35	1000	800	0.08	6000
WWCI0805-3N3B	3.3	250	±0.2 nH	60	1000	800	0.08	6000
WWCI0805-3N9B	3.9	250	±0.2 nH	60	1000	600	0.06	6000
WWCI0805-4N7B	4.7	250	±0.2 nH	60	1000	600	0.06	5800
WWCI0805-5N6J	5.6	250	±5%	40	1000	600	0.1	5500
WWCI0805-6N8J	6.8	250	±5%	50	1000	600	0.11	5500
WWCI0805-8N2J	8.2	250	±5%	60	1000	600	0.06	5500
WWCI0805-10NJ	10	250	±5%	60	500	600	0.08	4800
WWCI0805-12NJ	12	250	±5%	45	500	600	0.15	4000
WWCI0805-15NJ	15	250	±5%	50	500	600	0.17	3400
WWCI0805-18NJ	18	250	±5%	50	500	500	0.2	3300
WWCI0805-22NJ	22	250	±5%	60	500	600	0.1	3300
WWCI0805-27NJ	27	250	±5%	60	500	600	0.12	2600
WWCI0805-33NJ	33	250	±5%	60	500	500	0.15	2400
WWCI0805-39NJ	39	250	±5%	50	500	500	0.29	2000
WWCI0805-47NJ	47	200	±5%	60	500	500	0.15	1700

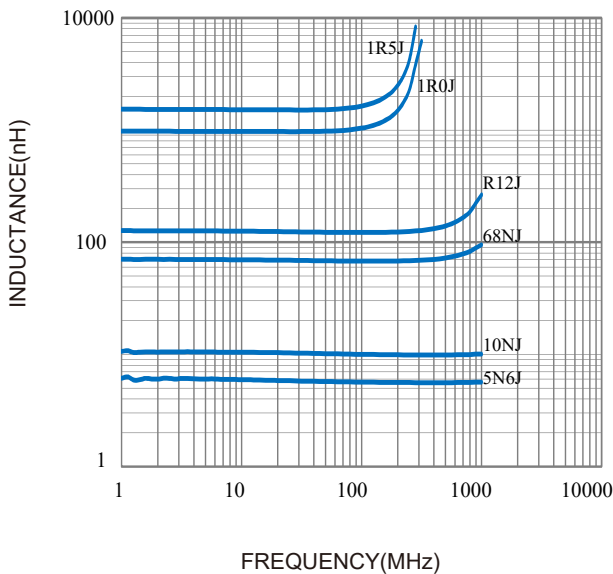
Part No	Inductance (nH)	Test Condition @MHz	Tolerance	Q Min.	Test Condition Q @MHz	Temperature Rise Current Max. (mA)	DCR Max. (Ω)	SRF Min. (MHz)
WWCI0805-56NJ	56	200	±5%	60	500	500	0.25	1600
WWCI0805-68NJ	68	200	±5%	50	500	500	0.38	1450
WWCI0805-82NJ	82	150	±5%	60	500	500	0.32	1350
WWCI0805-R10J	100	150	±5%	50	500	400	0.46	1200
WWCI0805-R12J	120	150	±5%	35	250	400	0.51	1100
WWCI0805-R15J	150	100	±5%	40	250	400	0.56	920
WWCI0805-R18J	180	100	±5%	50	250	400	0.78	900
WWCI0805-R22J	220	100	±5%	50	250	400	1	860
WWCI0805-R27J	270	100	±5%	35	250	350	1.29	650
WWCI0805-R33J	330	100	±5%	45	250	300	1.65	800
WWCI0805-R39J	390	100	±5%	45	250	210	2.2	780
WWCI0805-R47J	470	50	±5%	30	100	250	2.3	375
WWCI0805-R56J	560	25	±5%	23	50	230	2.5	340
WWCI0805-R62J	620	25	±5%	23	50	400	2.7	188
WWCI0805-R68J	680	25	±5%	23	50	190	2.8	188
WWCI0805-R82J	820	25	±5%	23	50	180	3.9	215
WWCI0805-1R0J	1000	25	±5%	23	50	150	4.2	285
WWCI0805-1R2J	1200	7.9	±5%	20	25	150	4.6	200
WWCI0805-1R5J	1500	7.9	±5%	20	25	130	5.3	200

Operating temperature: -40 to +125°C

Temperature rise current: the actual value of DC current when the temperature rise is ΔT15°C

Typical Electrical Characteristics:

Inductance VS. Frequency Characteristics:



Temperature Rise VS. Frequency Characteristics:

